

# COMO



## TECHNICAL SPECIFICATIONS

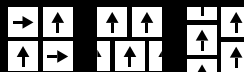
|                                 |   |
|---------------------------------|---|
| <b>Product Range</b>            | Como                                      |
| <b>Product Description</b>      | Tufted Multi-Level Loop Carpet Tile       |
| <b>Yarn / Fibre</b>             | 100% Solution Dyed Nylon                  |
| <b>Machine Gauge</b>            | 1/12th                                    |
| <b>Pile Height</b>              | 3mm +/-0.5mm                              |
| <b>Total Thickness</b>          | 7mm +/-0.5mm                              |
| <b>Tile Size</b>                | 50cm x 50cm                               |
| <b>Backing Structure</b>        | PVC with Recycled Content or Cushion Back |
| <b>Tile Installation Method</b> | Quarter Turn, Brick, Ashlar               |

## SUSTAINABILITY SPECIFICATIONS

|                            |  |
|----------------------------|--|
| <b>Less Waste</b>          | Modular carpet creates 85 – 90% less waste than broadloom carpet   |
| <b>Product Stewardship</b> | 100% take back & repurpose through accredited partner  |
| <b>Recycled Content</b>    | Minimum of 55% recycled content in the backing structure<br><br>Average of 40% recycled content by weight of product |

## PERFORMANCE SPECIFICATIONS

|                               |  |
|-------------------------------|--|
| <b>Area of Use</b>            | Commercial   |
| <b>Dimensional Stability</b>  | Less than 0.2% variation   |
| <b>Biocontaminant Control</b> | Ultra Fresh Anti-microbial treated   |
| <b>Anti-Static</b>            | AATCC134 < 3000 Volts  |
| <b>Warranty</b>               | 15 year limited warranty:<br>• Manufacturing defect<br>• Dimensional stability<br>• Electrostatic propensity |



Specifications are subject to and may change without notice.  
Colour variation may occur between sample and production due to dye lot tolerances.