

# Nouvelle Hybrid Flooring Installation Instruction

## IMPORTANT NOTICE:

PLEASE READ THE ENTIRE INSTALLATION INSTRUCTIONS CAREFULLY BEFORE PROCEEDING WITH THE INSTALLATION. IF NOT SURE, PLEASE CONTACT YOUR RETAILER.

PROCEED WITH A VISUAL INSPECTION OF THE BOARDS BEFORE INSTALLATION. ONCE INSTALLED, THE BOARDS ARE CONSIDERED ACCEPTED BY THE INSTALLER AND THE HOMEOWNER.

NOUVELLE HYBRID FLOORING MUST BE INSTALLED AS FLOATING FLOOR METHOD ONLY AND SHOULD NOT BE GLUED, SCREWED, NAILED, OR ANY OTHER FASHION FIXED TO THE FLOOR.

STEAM MOP CLEANING METHOD IS NOT ALLOWED UNDER ANY CIRCUMSTANCES.

THE USE OF SILICONE OR CAULKING COMPOUND IS NOT ALLOWED AROUND THE PERIMETER OF THE INSTALLATION. (EXCEPT SMALL WET AREAS - IF UNSURE, PLEASE REFER TO THE 'WET AREAS' SECTION ON PAGE 2).

## ACCLIMATISATION & SITE INSPECTION

- Nouvelle Hybrid flooring must be installed in a regulated and liveable environment to prevent possible damage not covered by warranty. The site room temperature should be between 10°C -30°C.
- Nouvelle Hybrid flooring requires a minimum of 24 hours acclimatisation at a room temperature between 10°C -30°C, in unopened packs prior to installation. Ensure all packs are stacked no more than 4-pack high and stored separated at least 300mm apart.
- Make sure the room temperature is kept between 0°C - 35°C after installation.
- Avoid exposure to direct sunlight, sliding doors and/or windows need to be covered by blinds or curtains.
- Flooring should not be delivered until the building has been closed in and cement work, plastering, painting, and other materials are completely dry. Concrete and plaster should be cured and at least 60 days old.
- Each plank should be carefully checked prior to installation, do not install sub-standard, non-confirming, or faulty boards. Do alignment inspections as you continue the installation.
- Handle with care. Do not stand packs on their ends.
- When Nouvelle Hybrid flooring is ordered, allow approximately 5%-10% for wastage and off-cuts, depending upon the size or layout of the room or installation area. (Please note: diagonal installations may require additional wastage allowances.)

## GENERAL INFORMATION

When installing Nouvelle Hybrid flooring, you must leave an expansion gap around the perimeter of the room of 10mm to prevent binding of the flooring. The planks must not be glued or tacked to the subfloor in any way. Do not install cabinets or kitchen islands on top of floating floors. An expansion gap should be maintained when meeting other types of flooring. This also applies to any obstructions (columns, pipes, etc.) in the installation. Door jambs must be undercut to allow for expansion; do not force the flooring under tight door jams. Before installing the flooring, you must clean, sweep or vacuum the subfloor so that it is free of dirt and debris. Verify the moisture content of the subfloor using a moisture meter or another approved method to make sure it meets the standard.

### Cutting the planks

When cutting Nouvelle Hybrid flooring, it is recommended to cut with the decorative side up by using Utility Knife and "Score and Snap", you can also use Jigsaw to cut the long side with the decorative side down. Always start a row with a plank at least 400mm long and ensure the minimum end joint offset is 400mm apart.

### Expansion Gap

If the installation areas are greater than 30m in length and/or 15m in width or those with separate rooms, you will require the use of transition moulding to provide proper expansion space. Remove base mouldings. If necessary, the planks in the first row can be cut to a narrower width to ensure the planks of the final row are at least 50mm wide.

### Wet Areas

Nouvelle Hybrid flooring can be installed in small wet areas including bathroom & laundry (it should not exist 5x5m). It must be separated from any adjoining floors. Seal the perimeter of the floor using a bathroom grade silicone.

### Under Floor Heating

Nouvelle Hybrid flooring can be installed over hydronic heated slabs. The floor must be installed by a professional installer, and always follow all the manufacturers' guidelines to make sure your warranty won't be comprised. Operate the heating system at maximum capacity for at least 14 days prior to installation to reduce residual moisture from the concrete. Shut down the heating system at least 48 hours prior to installation. Make sure that the room temperature is a minimum of 16°C during the installation. In addition, the temperature of the heated slab must not exceed over 26°C at any time, nor increases/decreases by 2°C each day until your reached desired temperature. After floor installation is complete, the floor requires gradual acclimatisation in conjunction with the heating system. Using an in-floor temperature sensor is highly recommended to avoid overheating. Please contact your retailer or visit our website [www.asttimbers.com.au](http://www.asttimbers.com.au) for more technical information.

### Layout and Measure

First, determine which way to run the planks. Rules of thumb are:

- Lengthwise in the longest direction of the room.
- Lengthwise perpendicular to the main source of incoming light.

To avoid straddling a door jamb with a plank, measure back to the starting wall to ensure a plank connection within the door jamb area. It is recommended that you do not end up with a narrow strip at the end that is less than 50mm wide on any wall in the room. Make sure to cut both first and last rows, so they are equal in width. Undercut all door jambs so that the flooring will easily slide underneath them. Using a scrap piece of flooring and underlay as a guide, undercut the jambs with a jamb saw or regular handsaw. Always leave an expansion space between the flooring and all walls or other fixed objects.

### Tools Required

Spacers, Utility Knife, Rubber Mallet, Tape Measure, Jigsaw, Ruler, Pencil, Pull Bar, Tapping Block, Jigsaw, Jamb Saw, Safety Glasses, Hammer.

## VISUAL INSPECTION AND MIXING PLANKS

### Notice to installer

Planks showing visible defects should never be installed. These planks should be put aside and used for cuts or submitted for a product claim. Claims resulting from the installation of such planks will not be honoured. For best results, it is recommended that material be mixed from four (4) to six (6) boxes when installing Nouvelle Hybrid flooring. Do not put similarly patterned planks next to each other. In addition, randomly stagger end joints for best visual appeal.

## PREPARATION

**\*SUBFLOORS MUST BE CHECKED PRIOR TO INSTALLATION\***

### Subfloor

Please ensure the subfloor or surface flooring is level when being installed. Using a 1m straightedge, the subfloor level should not exceed 3mm over 1 lineal meter in any direction.

Remember, uneven floors may lead to movement and noise, so it is necessary to assess the levelness and get it right. Timber subfloors can be sanded level and concrete subfloors; or existing floor coverings can usually be level using a cement-based self-leveling compound.

Nouvelle Hybrid flooring cannot be installed over any existing flooring that has an attached cushion or is a floating floor; such as carpet or carpet underlay. However, it can be install over well bond vinyl or ceramic tiles if sufficiently level.

Concrete slab must be cured and dry. The relative humidity of concrete slab must not exceed over 85% at all times with the current Australian Building Codes.

Wooden and wood-based materials (plywood, OSB, particle board) must be dry, with a moisture reading no greater than 14% (this should be checked with a moisture meter). All wooden subfloors must be greater than 19mm of thickness. Ensure that the boards of the subfloor are properly fastened to the supporting beams and that you do not have any squeaking or depressed areas. Patch if required and fill depressed areas with floor levelling compound. Raised areas must be sanded down. The subfloor must be smooth, flat, structurally sound, and free of deflection.

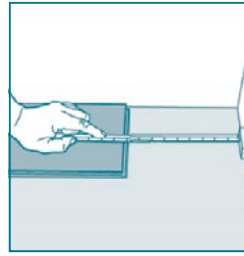
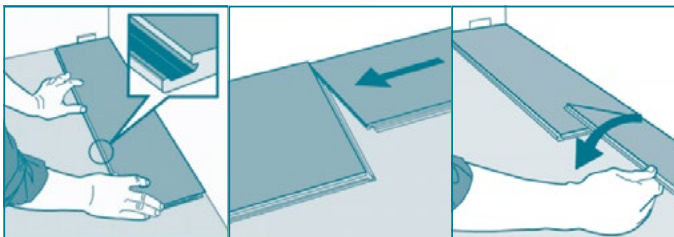
### Underlay

Nouvelle Hybrid flooring has attached 1.5mm acoustic Cork Back Layer which is more qualified for most residential installations. No extra underlay is required. For commercial or multi-residential installations, please make sure to check with the manufacturers to confirm that it meets the specification.

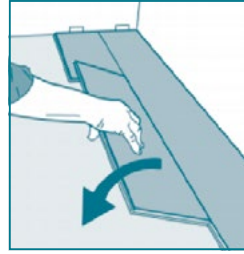
## INSTALLATION

**1. Getting started** Check the planks before you start to make sure that they are not in any way damaged or have quality defects.

**2. First row** Start installation of the planks in the left-hand corner, tongue-side against the wall. Make sure you place the short side of the plank 10mm from the wall. It is practical to adjust the gap between the long sides and the wall later, when three rows have been installed. Place next floorboard tight to the short end of the first one in the corner, then fold down and tap in by using rubber mallet. Ensure the long sides of the planks make a straight line. Complete the first row in the same way.

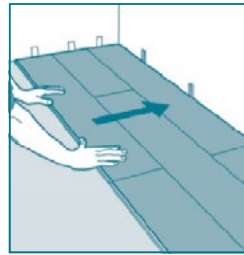


**3. Completing the first row** Place the final plank face down. The distance to the wall must be 10mm. Mark where the plank is to be cut. Place the plank face upside on the work surface and cut to size using a utility knife and "Score and Snap".



**4. Starting the second row** Use a cut piece of the plank at least 400mm long from the previous row to start the next row. Always ensure that the end joints are randomly staggered at least 400mm. Place the next floorboard tight to the short end of the previous panel and fold down and tap in with rubber mallet to make sure its

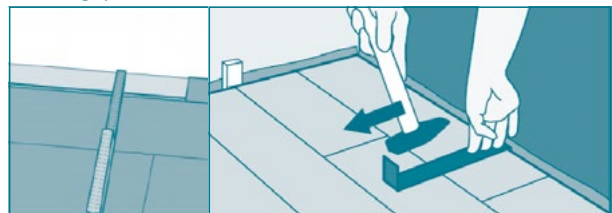
laid flat and fully engaged. **It is very critical and important to keep the first two rows straight and square as it may affect the rest of installation.**



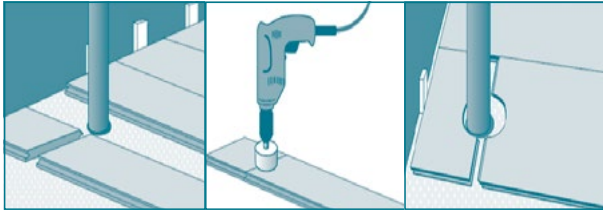
**5. Starting the second row** Place the plank at an angle against the plank in the previous row. Press forward and fold down at the same time. Use the rubber mallet to tap the boards in, and make sure it's fully engaged. Check to be certain that all planks are fully engaged. If gapping is noticeable or the planks are not laid flat, simply disengage the

long side by lifting up and then carefully slide the short side apart. **DO NOT PULL UP ON END JOINTS AS IT WILL DAMAGE THE LOCKING MECHANISM.** After 2-3 rows, adjust the distance to the front wall by placing a distance of 10mm away from the wall. Continue the row by locking in the length of the planks, and push it down with the rubber mallet until the end sides are fully joined together.

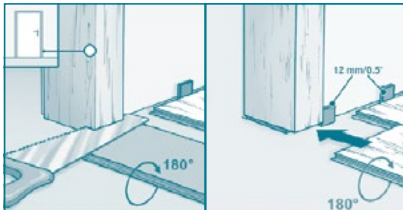
**6. Continuing installation** Measure and cut the plank. Leave 10mm gap to the wall.



**7. Holes for pipes** Measure the diameter of the pipe and drill a hole that is 20mm larger for the expansion. Saw off a piece and lay the plank in place on the floor.



**8. Door moulding and skirting** Lay a plank, with the decorative side down, next to the door moulding to measure where it is to be cut by using jamb saw or regular handsaw. Cut the plank and slide it under the moulding.



**9. Lifting or Removing** It is possible to remove or replace planks that have been laid as floating flooring in living areas and commercial areas without causing damage by the first releasing the whole row along the long side by angling it up to free it from the locking mechanism, the planks then can be disengaged by sliding apart carefully on the end/short side. **DO NOT PULL UP ON THIS JOINT AS IT WILL DAMAGE THE LOCKING MECHANISM.** Please be particularly diligent and careful when undertaking this work to avoid any damaging the locking systems.

**10. Finishing** Installing the scotia, skirting boards, and other mouldings against the wall. Never attach the mouldings to the floor. **THE USE OF SILICONE OR CAULKING COMPOUND IS NOT ALLOWED AROUND THE PERIMETER OF THE INSTALLATION. (EXCEPT SMALL WET AREAS - IF UNSURE, PLEASE REFER TO THE 'WET AREAS' SECTION ON PAGE 2).** This method allows the floor to expand and contract. Ensure the room temperature always between 0°C - 35°C. Protect furniture and chair legs with proper felt or plastic mats.

## CLEANING AND MAINTENANCE

1. You can immediately walk on your new Nouvelle Hybrid flooring after installation.
2. For dry maintenance, we recommend using PH neutral cleaner or vacuum cleaner. Make sure the vacuum cleaner is equipped with soft wheels and a special parquet brush to avoid scratches on your floor. Dry cleaning of the floor should be carried out regularly to remove loose dirt, grit, and dust. To dry clean the floor, use a Dusting pad or soft broom. Meanwhile, you can also clean with a wet mop with a PH neutral cleaner for Nouvelle Hybrid flooring as its 100% waterproof product.
3. Steam mops are not allowed for Nouvelle Hybrid flooring under any circumstances.
4. Protect furniture and chair legs. Avoid bringing dirt, water, and sand indoors by providing a suitable floor mat at the door. Use (office) chairs and seats with soft wheels that are suitable for a laminate floor and/or use a suitable desk mat.
5. Do not drag items of furniture over the floor, but lift them up.
6. Nouvelle Hybrid flooring will not retain dirt or dust. Remove stubborn stains carefully with acetone or nail polish remover. Do not use scouring products and any wax, or varnish coating on the floor.
7. Do not use any household cleaning or chemical solution products to clean your floor, it may damage the surface coating.

Please always visit our website [www.asttimbers.com.au](http://www.asttimbers.com.au) for the most up-to-date version of instructions, and care & maintenance as it may have been revised or updated.

**100%**  
**WATER**  
**PROOF**

**Lifetime**  
residential warranty

**15 Year**  
commercial warranty

[www.asttimbers.com.au](http://www.asttimbers.com.au)

 **nouvelle**  
Next Level Hybrid Flooring