

Reflections® 12mm ELITE Laminate Flooring Installation Instruction

IMPORTANT NOTICE:

PROCEED WITH A VISUAL INSPECTION OF THE BOARDS BEFORE INSTALLATION. ONCE INSTALLED, THE BOARDS ARE CONSIDERED ACCEPTED BY THE INSTALLER AND THE HOME OWNER.

PLEASE READ THE ENTIRE INSTALLATION INSTRUCTIONS BEFORE PROCEEDING WITH THE INSTALLATION.

ACCLIMATISATION & SITE INSPECTION

- Reflections® 12mm laminate flooring must be installed in a regulated and liveable environment to prevent possible damage not covered by warranty. As such, Reflections® Laminate Flooring should not be installed more than 2 weeks prior to occupation of the home. The floor is designed to perform in an environmentally controlled structure.
- Please store the packets 48 hours prior to installation under the same climatic conditions (temperature and moisture) as the actual installation process. Important pre-condition for proper fitting and long-term durability of the laminated flooring is a room temperature between 15°C - 27°C and a relative humidity of around 45-60%.
- Do not install in bathrooms, laundry, toilets or areas subject to regular moisture or water.
- Flooring should not be delivered until the building has been closed in and cement work, plastering, painting and other materials are completely dry. Concrete and plaster should be cured and at least 60 days old. Check basements and underfloor crawl space to be sure they are dry and well ventilated to avoid damage caused by moisture.
- Each plank should be carefully checked prior to installation, do not install sub-standard, non-confirming or faulty boards. Do alignment inspections as you continue the installation.
- Handle with care. Do not stand packs on their ends.
- When Reflections® laminate flooring is ordered, allow approximately 5%-10% for wastage and off-cuts, depending upon size or layout of the room or installation area. (Please note: diagonal installations may require additional wastage allowances.)
- Extremes in humidity levels in the home must be prevented all year long. Laminate flooring is a living product which reacts to humidity level variations. During summer, where the humidity level is usually at its highest point, the flooring is expected to expand as it absorbs moisture from the air. These variations must be dealt with adequate dehumidification. As for winter, when the heating system is working, the humidity level is lower. It is then recommended to use a humidifier to minimise the extreme effects of shrinkage.

GENERAL INFORMATION

When installing Reflections® 12mm laminate flooring, you must leave an expansion gap around the perimeter of the room of 10-12mm to prevent binding of the flooring. The planks must not be glued or tacked to the subfloor in any way. Do not install cabinets or kitchen islands on top of floating laminate floors. An expansion gap should be maintained when meeting other types of flooring. This also applies to any obstructions (columns, pipes, etc.) in the installation. Door jambs must be undercut to allow for expansion; do not force the laminate product under tight door jams. Installations greater than 12m in length or greater than 8m in width or those with separate rooms will require the use of transition moulding to provide proper expansion space. Remove base mouldings. If necessary, the planks in the first row can be cut to a narrower width to ensure the planks of the final row are at least 50mm wide.

Before installing the flooring, you must clean, sweep or vacuum the subfloor so that it is free of dirt and debris. Verify the moisture content of the subfloor using a moisture meter or another approved method.

Layout and measuring

First, determine which way to run the planks. Rules of thumb are:

- Lengthwise in the longest direction of the room.
- Lengthwise perpendicular to the main source of incoming light.

To avoid straddling a door jamb with a plank, measure back to the starting wall to ensure a plank connection within the door jamb area. It is recommended that you do not end up with a narrow strip at the end that is less than 50mm wide on any wall in the room. It is highly recommended to cut both first and last rows, so they are equal in width. Undercut all door jambs so that the flooring will easily slide underneath them. Using a scrap piece of flooring and underlayment as a guide, undercut the jambs with a jamb saw or regular handsaw. Always leave an expansion space between the flooring and all walls or other fixed objects.

VISUAL INSPECTION AND MIXING PLANKS

Notice to installer

Planks showing visible defects should never be installed. These planks should be put aside and used for cuts or submitted for a product claim. Claims resulting from the installation of such planks will not be honoured. For best results, it is recommended that material be mixed from four (4) to six (6) boxes when installing Reflections® 12mm laminate flooring. Do not put like planks next to each other and randomly stagger end joints for best visual appeal.

Cutting the planks

When cutting laminate flooring with a circular saw, it is recommended to cut with the decorative side down. When using a table saw, jigsaw or handsaw, cut with the decorative side up.

Always start a row with a plank at least 400mm long and insure the minimum end joint offset is 400mm apart.

PREPARATION

SUBFLOORS MUST BE CHECKED PRIOR TO INSTALLATION

Sub-Floor

Please ensure the sub-floor or surface that the flooring is being installed over is level. Using a 1m straightedge, the sub-floor level should not exceed 3mm over 1 lineal metres in any direction. Remember, uneven floors may lead to movement and noise, so it is necessary to assess the levelness and get it right. Timber subfloors can be sanded level and concrete sub-floors or existing floor coverings can usually be levelled using a cement based self-levelling compound. Reflections® Laminate Flooring cannot be installed over any existing flooring that has an attached cushion or is a floating floor such as carpet or carpet underlay, but can be installed over well bond vinyl or ceramic tiles if sufficiently level.

Wooden and wood-based materials (plywood, OSB, particle board) must be dry, with a moisture reading no greater than 14% (this should be checked with a moisture meter). All wooden subfloors must be greater than 19 mm thickness. Ensure that the boards of the subfloor are properly fastened to the supporting beams and that you do not have any squeaking or depressed areas. Patch if needed and fill depressed areas with floor levelling compound. Raised areas must be sanded down. The subfloor must be smooth, flat, structurally sound and free of deflection.

Before installing any floor, a moisture level measurement of the sub-floor is very important to know so that we can choose the correct installation procedure(s). If the moisture level is above 70% relative humidity as measured by an approved moisture meter that complies with the current Australian ATFA codes, you must first install a 200um minimum plastic moisture proof membrane or sheeting. Where the membrane edges meet, they must overlap by 300mm and the joints must be sealed using a waterproof tape. All walls and vertical fixtures must have the membrane turned up and then trimmed back to the appropriate level depending on skirting and/or beading to be installed.

Should the relative humidity of the sub-floor be above 85%, not any flooring should be installed.

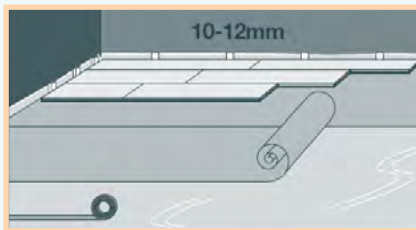
Underlay

Reflections® 12mm laminate flooring is installed by floating floor method and may not be glued, screwed, nailed or any other fashion fixed to the floor. All type of sub-floors require moisture inhibiting membrane(underlay). Underlay must be used on the sub-floor prior to Reflections® 12mm laminate flooring installation. We highly recommend using our "**Select Acoustic Underlay**", available on 2 and 3mm thicknesses with incorporating a 0.08 and 0.1mm polyethylene moisture barrier to reduce sound transmission and retard moisture ingress. The underlay must be applied with a minimum 200mm overlap and sealed with waterproof tapes. All walls and vertical fixtures must have the underlay turned up and then trimmed back to the appropriate level depending on skirting and/or beading to be installed.

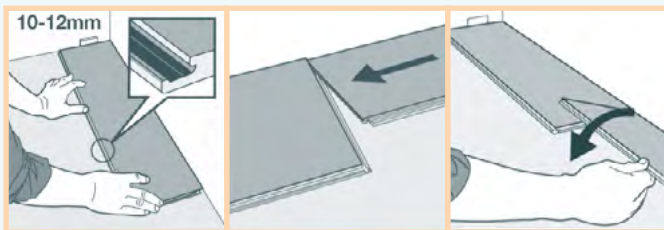
Large rooms must have expansion joints every 8m width-wise and 12m length-wise. It is recommended to provide an expansion joint between different rooms (e.g. doorways) to allow for normal expansion and contraction.

INSTALLATION

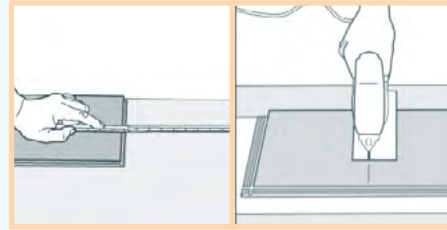
1. Getting started Check the planks before you start to make sure that they are not in any way damaged or have quality defects. After cleaning the subfloor, you may roll out our 2mm or 3mm **Select Acoustic Underlay** and must use its 200mm overlap and tape to ensure the moisture protection.



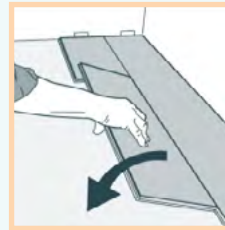
2. First row Start installation of the planks in the left-hand corner, tongue-side against the wall. Make sure you place the short side of the plank 10-12mm from the wall. It is practical to adjust the gap between the long sides and the wall later, when three rows have been installed. Place next floorboard tight to the short end of the first one in the corner, then fold down with a single action movement. Make sure the long sides of the planks make a straight line. Complete the first row in the same way.



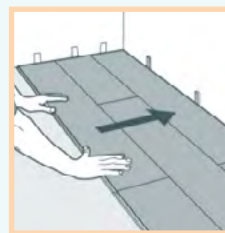
3. Completing the first row Place the final plank face down. The distance to the wall must be 10-12mm. Mark where the plank is to be cut. Place the plank face down on the work surface and cut to size using a circular saw. If you are using a hand saw, ensure that it is fine toothed and cut the plank face up.



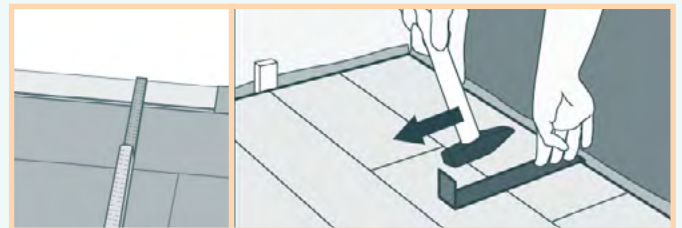
4. Starting the second row Use a cut piece of plank at least 400mm long from the previous row to start the next row. Always ensure that the end joints are randomly staggered at least 400mm. Place the next floorboard tight to the short end of the previous panel and fold down in a single action movement.



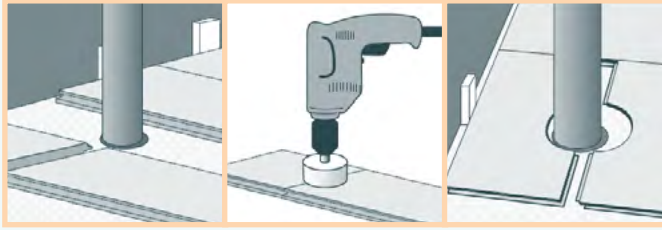
5. Continuing installation Place the plank at an angle against the plank in the previous row, press forward and fold down at the same time. Take a new plank and push the corresponding side into the groove of the planks already in place on the floor. Push the plank down properly so that it joins with the side of the plank already in place. After 2-3 rows, adjust the distance to the front wall by placing distances 10-12mm. Continue the row by locking in the length of the planks and pushing down until the ends are joined together.



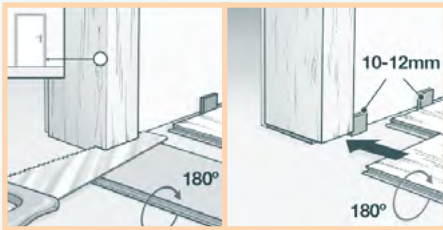
6. Laying the last row Measure and cut the plank. Leave 10-12mm gap to the wall.



7. Holes for pipes Measure the diameter of the pipe and drill a hole that is 20mm larger for the expansion. Saw off a piece and lay the plank in place on the floor.



8. Door moulding and skirting Lay a plank, with the decorative side down, next to the door moulding to measure where it is to be cut. Cut the plank and slide it under the moulding.



9. Lifting or removing It is possible to remove or replace planks that have been laid as floating flooring in living areas and commercial areas without causing damage by the first releasing the whole row along the long side by angling it to free it from the locking mechanism. The planks can be separated from one another by lifting the tongue side out of the groove and removing laterally. Please be particularly diligent and careful when undertaking this work to avoid any damaging the locking systems.

10. Finishing Installing the scotias, skirting boards and other mouldings against the wall. Never attach the mouldings to the floor. This method allows the floor to expand and contract if moisture or relative humidity changed. Ensure the relative humidity in the room is always between 45-60%, use a humidifier if you need to. Protect furniture and chair legs with proper felt or plastic mats.

CLEANING AND MAINTENANCE

1. You can immediately walk on your new Reflections® 12mm laminate flooring after installation.
2. For dry maintenance, we recommend using Bona laminate floors cleaner kit or vacuum cleaner. Make sure the vacuum cleaner is equipped with soft wheels and a special parquet brush to avoid scratches on your floor. Dry cleaning of the floor should be carried out regularly to remove loose dirt, grit and dust. Use a Bona Dusting pad or soft broom. If vacuum cleaning, the cleaning head must have a soft brush not to damage the floor.
3. It is important to understand that steam mops and wet mopping are not recommended for any hard surface floor covering in all circumstances.
4. Make sure to wipe up all liquid spills immediately.
5. Protect furniture and chair legs. Avoid bringing dirt, water and sand indoors by providing a suitable floor mat at the door. Use (office) chairs and seats with soft wheels that are suitable for a laminate floor and/or use a suitable desk mat.
6. Never drag items of furniture over the floor, but lift them up.
7. Reflections® 12mm laminate flooring will not retain dirt or dust. Remove stubborn stains carefully with acetone or nail polish remover. Never use scouring products! Never use wax or varnish coating on the floor.

Please always to visit our website www.asttimbers.com.au for the most up-to date version of instruction and care & maintenance as it may have been revised and updated.